



Front Elevation

BASEMENT 2076 SQ.FT.
FIRST FLOOR 2468 SQ.FT.
SECOND FLOOR 2557 SQ.FT.
TOTAL: 7101 SQ.FT.



The Olivia

© 2017 Oak Hill Building & Remodeling

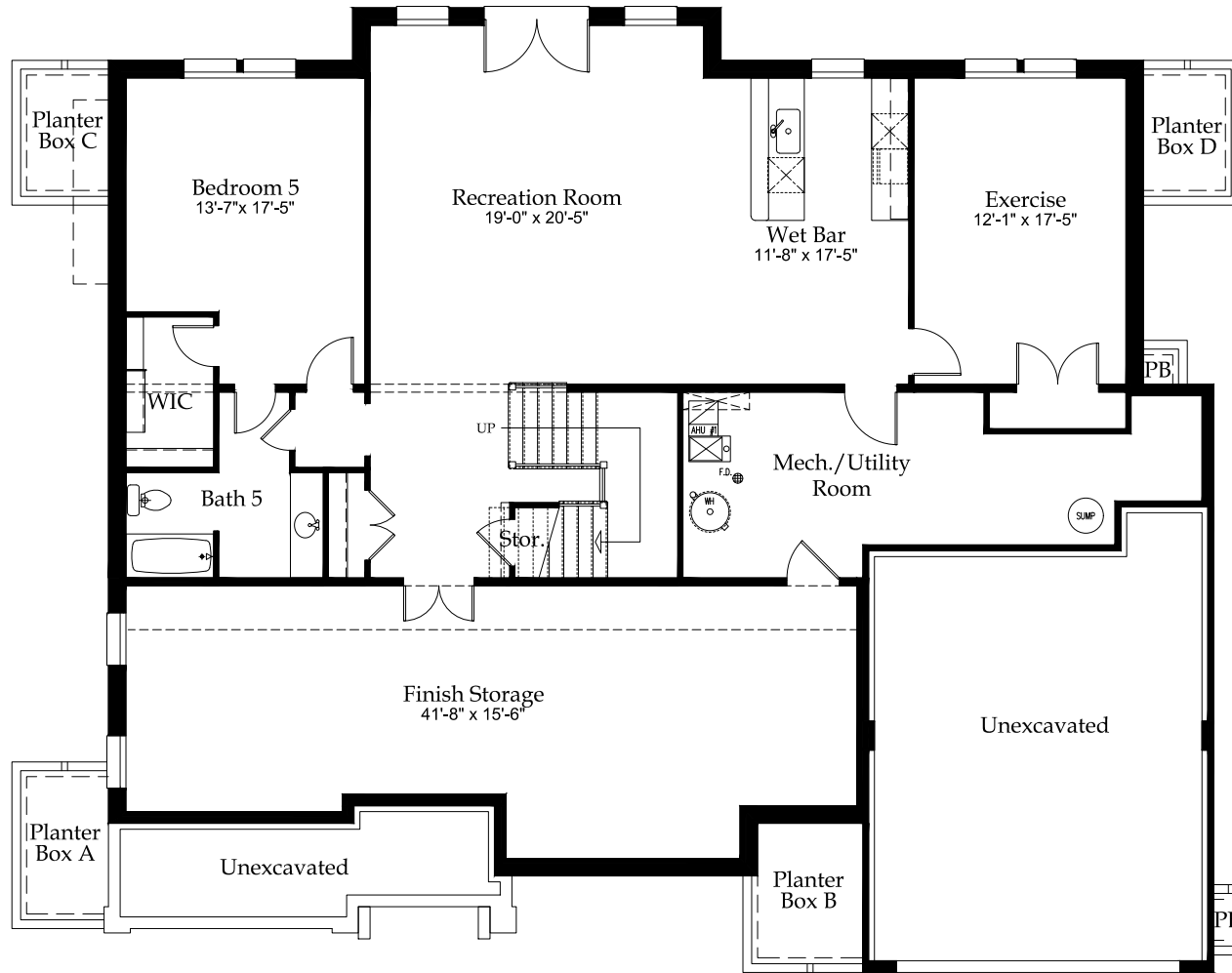


Thomas Vitale
6820 Elm St.
McLean, VA 22101
phone: 703.582.9383
email: thomasvitale@kw.com

kw
KELLERWILLIAMS.



In the interest of continuous improvements and to meet changing market conditions, we reserve the right to modify plans, dimensions, specifications or products without notice or obligation.



Finished Basement

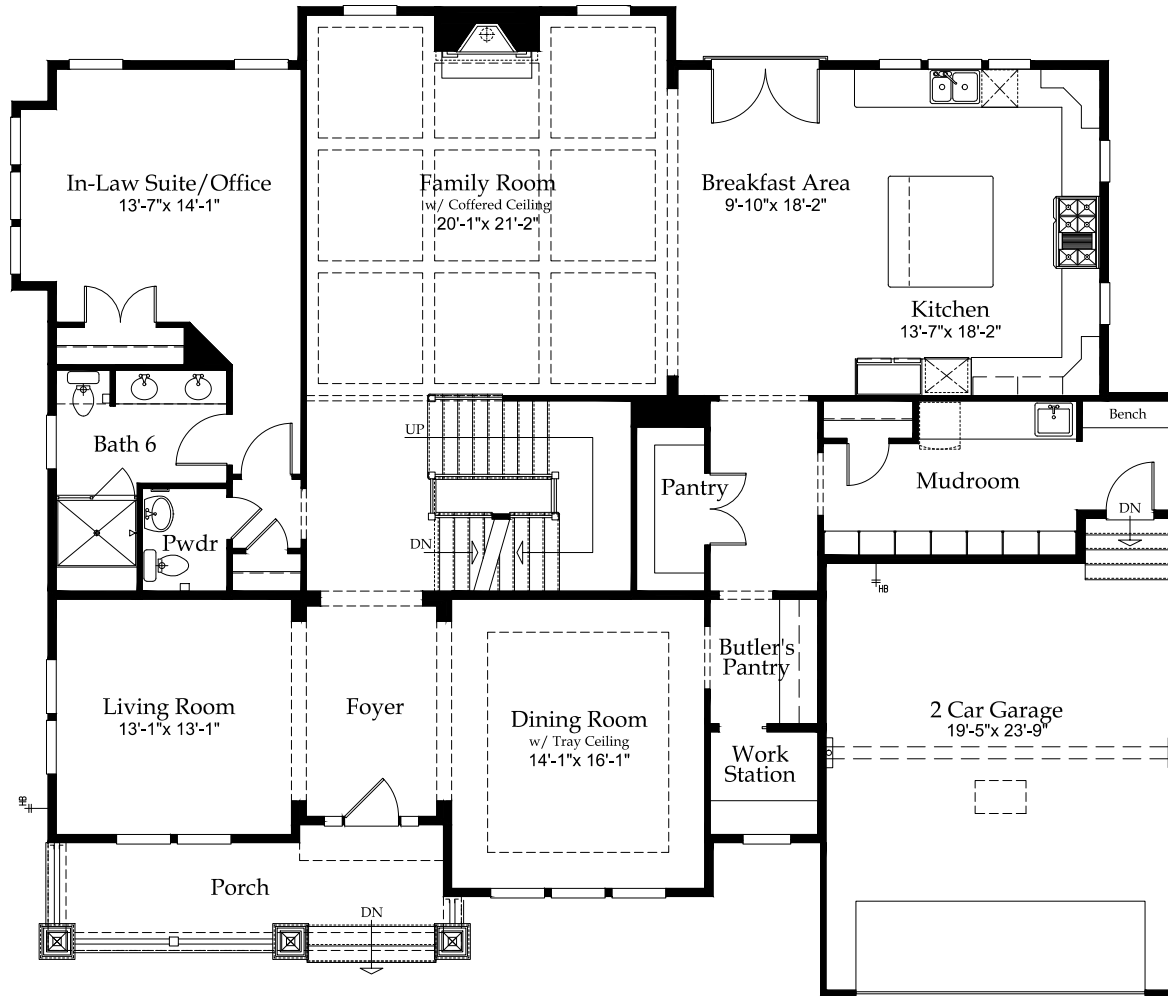


The Olivia

© 2017 Oak Hill Building & Remodeling



In the interest of continuous improvements and to meet changing market conditions, we reserve the right to modify plans, dimensions, specifications or products without notice or obligation.



First Floor

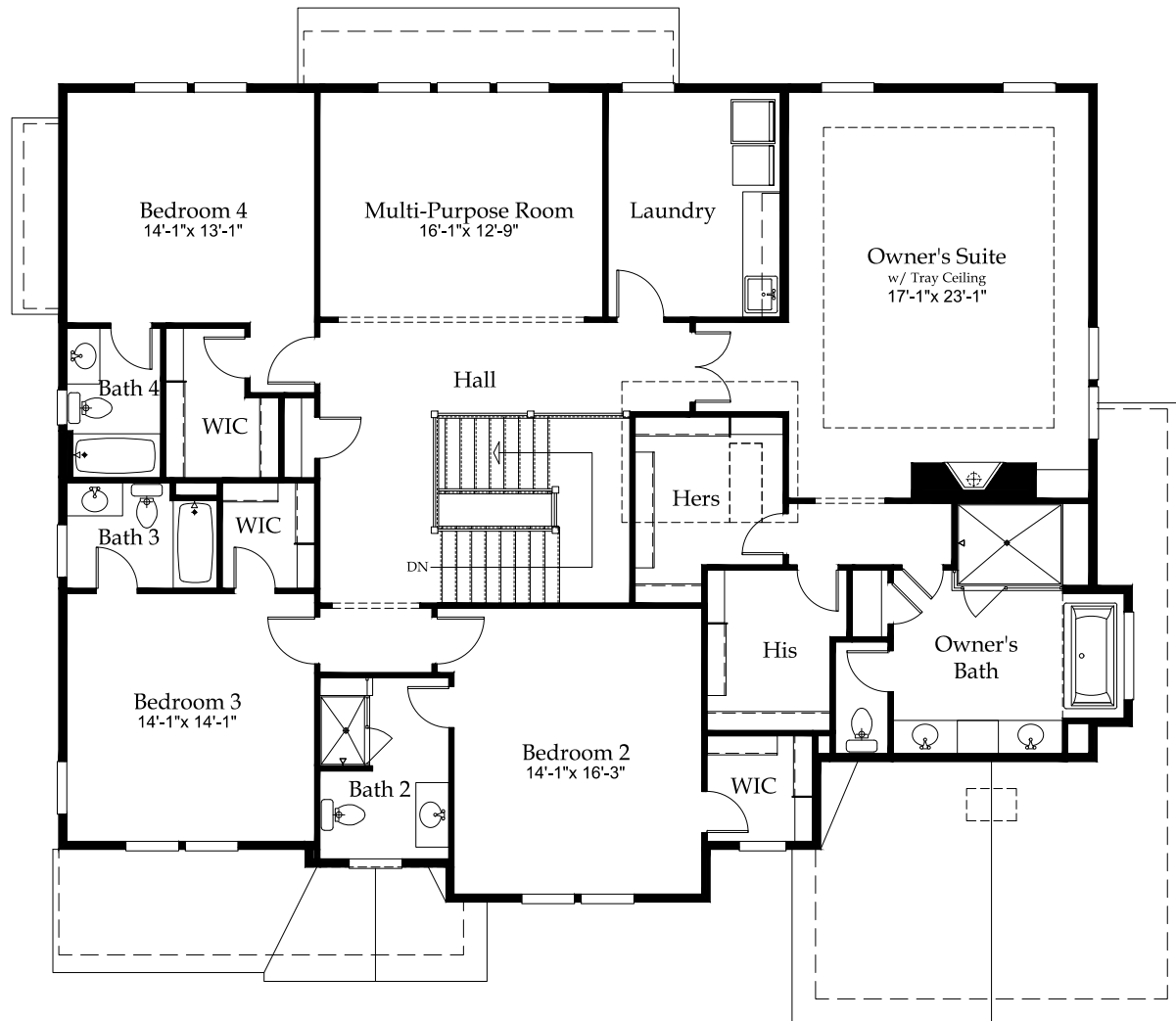


The Olivia

© 2017 Oak Hill Building & Remodeling



In the interest of continuous improvements and to meet changing market conditions, we reserve the right to modify plans, dimensions, specifications or products without notice or obligation.



Second Floor



The Olivia

© 2017 Oak Hill Building & Remodeling



In the interest of continuous improvements and to meet changing market conditions, we reserve the right to modify plans, dimensions, specifications or products without notice or obligation.